



# 诠释一种美梦

编辑 / 陈静卉 图 / INFIDITO

在那，我们度过了生活的另一面。我们沉睡在那，组合出每个人的爱与生活的方式。同样，那也让小朋友感觉十分安全，在卧室里做他们甜甜的梦。所以要改造梦里的环境，要在那儿编作自己的童话，在那儿找到王子或公主。INFIDITO意大利语是“没见过”的意思，概念在于通过一个完全新的概念改造适合幻想和度过另一半生活的地方。

We spend "the other half of life" there, deep in the mysterious rejuvenating realm we call sleep. It's a place for Love, where Life is pictured, intimate yet on show. A place of safety and shelter for our little ones. A space for sleep and dreams, a backdrop for tales to be told and lived, and magical encounters with princes and princesses. This is our mission - new objects and settings, an original concept for the other half of life.

## 温柔能被诠释

在品牌的应用艺术的历史中，已经有一份制度去设定标准与解决方案，诠释出其柔软度。试图去诠释它最彻底的本质，通过强大的能量，坚定志向，做出一个永远令人回味的产品，这是企业品牌的目标。

The history of applied arts has handed down a genuine alphabet of forms and solutions to create and express softness. It is our aim to interpret it by attempting to understand its deepest essence, driven by the powerful, unwavering ambition to be genuine and never evocative.

## 营造经典的睡眠曲线

从最简单到最复杂的曲线，总是与软和暖联系在一起。起伏的曲线也诠释着不同状态下美的概念。此外，这两个观察点也传达着一个对睡眠形态的理解。

Curves, from the simplest to the most complex, have always been associated with the idea of soft and warm by blending senses. Moreover, the harmonious combination of curve and reverse curve has been the expression of the very concept of beauty in various periods. The convergence of these two observations perhaps will convey a better understanding of the reassuring charm of the classical curves of sleep.

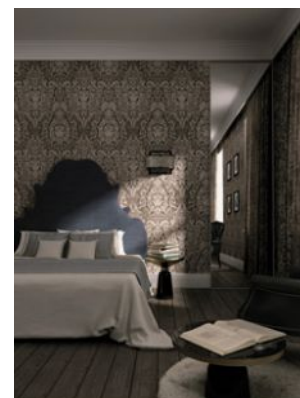
## 几何的简单美学

几何是简约美学，他普遍而自然，是一种形态感官，品牌将这种形态作为品牌深处内在的组成部分。简单并不意味着平庸或没有思想，这并不违背常识上的理解，它也有它的文化、比例以及黄金分割的几何研究。事实上，“唯美主义”不断借鉴它来追求理想的境界。

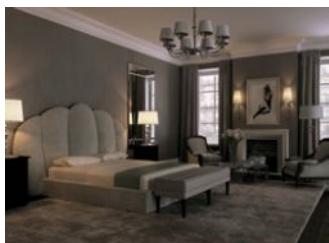
The beauty of geometry is not complicated on account of its universal nature and refers



Alberto Colzani







## 深圳家具·设计

to the forms. we can understand and appreciate as an intrinsic part of our innermost soul. Simple and uncomplicated does not mean commonplace or trite, since it navigates the sea of knowledge, geometry and the study of proportions and golden section. Indeed, the "aesthete" continuously draws upon it to pursue his ideal concept of beauty.

### 比例的合理变换

许多设计师认为,产品形态的急剧变化是艺术创作的必要本质,从而将其转化为一种艺术的审美体验。无论是扩大的物件的或者小型物件的设计概念,都决定着我们的生活品质。试想下我们的城市、建筑、甚至是佩戴的金饰或手表。比例的转化能力是一个谜。在不同时期,不同地方,不同的市民的艺术中也许可以找到几个典范吧。

Many designers consider the expedient of a drastic change in scale as the very essence of artistic creation, which is thus transformed into an aesthetic experience in art. The idea of either enlarging or miniaturising objects underpins our daily perception of quality. Suffice to think of cities, architectures, and even the creations of goldsmiths, jewels and watches. The transforming power of proportions is a mystery that is hard to interpret, and finds several examples in the art of every age, place and civilisation.

